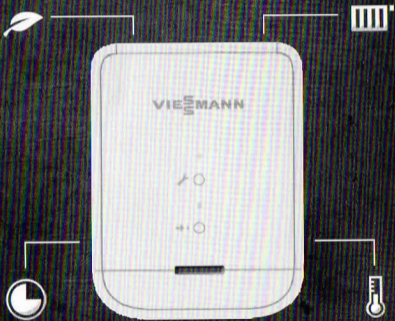
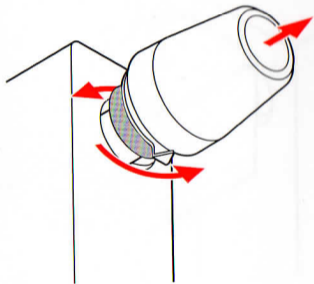


VISSMANN

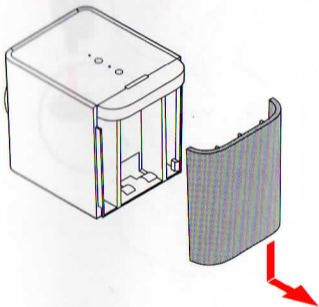


VISSMANN SMART GUIDE.

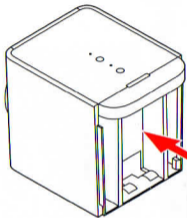
A) Montage - installation



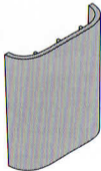
2



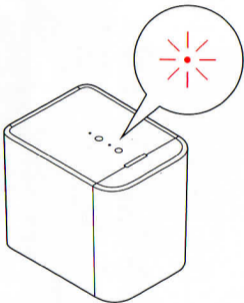
3



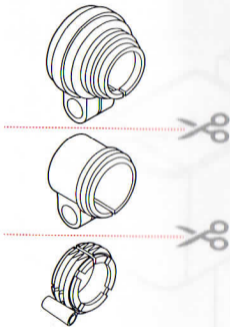
**2 x AA Alkali
1,5V**



4



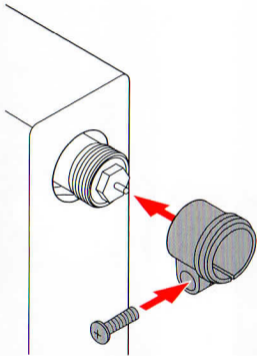
5 a)



Optional

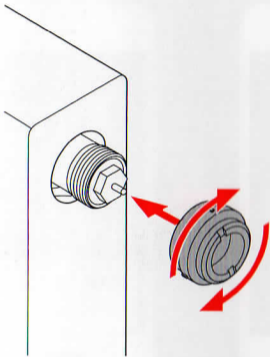
5

b)

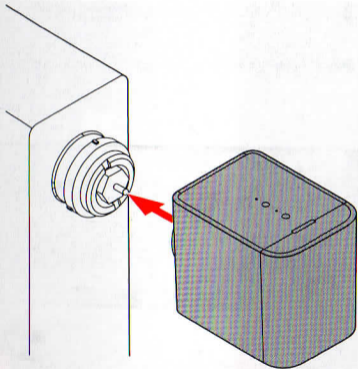


Optional

6



7



VISSMANN

VISSMANN SMART GUIDE.

VISSMANN

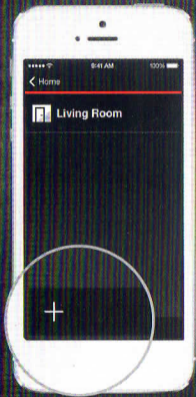


VISSMANN SMART GUIDE.

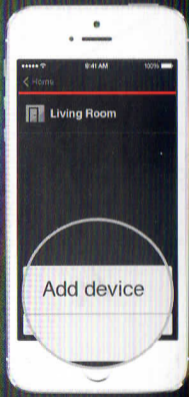
B) Inbetriebnahme - bringing into service



3



4



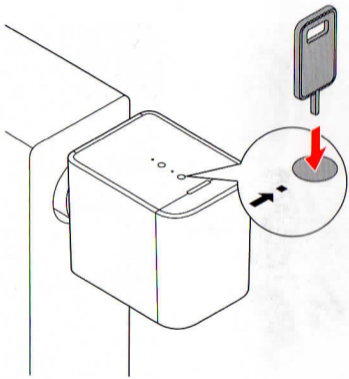
5



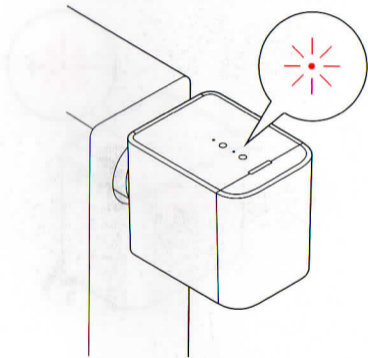
6



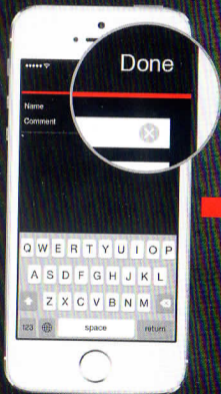
7



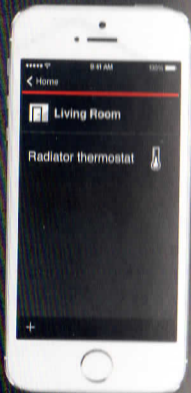
8



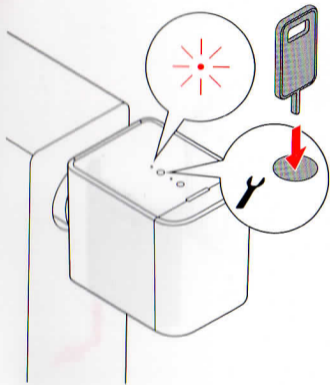
9



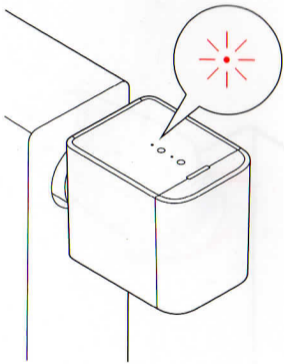
10



11



12



< 1 min.

Viessmann Werke GmbH & Co KG

D-35107 Allendorf

Telefon: +49 64 52 70-0

Telefax: +49 64 52 70-27 80

www.viessmann.de

5672 351

04/2015